



SoX Virtual Training Workshop

Hands-on Session 2: perfSONAR Monitoring and Debugging Dashboard (MaDDash)

Jorge Crichigno, Jose Gomez
University of South Carolina
<http://ce.sc.edu/cyberinfra>

Southern Crossroads (SoX)
The Engagement and Performance Operations Center (EPOC)
National Science Foundation (NSF)
University of South Carolina (USC)

Online
March 22nd, 2023



SoX Virtual Training Workshop

- Webpage with PowerPoint presentations:

http://ce.sc.edu/cyberinfra/sox_workshop_2023.html

- Hands-on sessions: to access labs for the hands-on sessions, use the following link:

<https://netlab.cec.sc.edu/>

- Username: email used for registration
- Password: nsf2023

perfSONAR Lab Series

- Lab experiments

Lab 1: Configuring Admin. Information Using perfSONAR Toolkit GUI

Lab 2: PerfSONAR Metrics and Tools

Lab 3: Configuring Regular Tests Using perfSONAR GUI

Lab 4: Configuring Regular Tests Using pScheduler CLI Part I

Lab 5: Configuring Regular Tests Using pScheduler CLI Part II

Lab 6: Bandwidth-delay Product and TCP Buffer Size

Lab 7: Configuring Regular Tests Using a pSConfig Template

Lab 8: perfSONAR Monitoring and Debugging Dashboard

Lab 9: pSConfig Web Administrator

Lab 10: Configuring pScheduler Limits

Organization of the Lab Manuals

Each lab starts with a section *Overview*

- Objectives
- Lab topology
- Lab settings: passwords, device names
- Roadmap: organization of the lab

Section 1

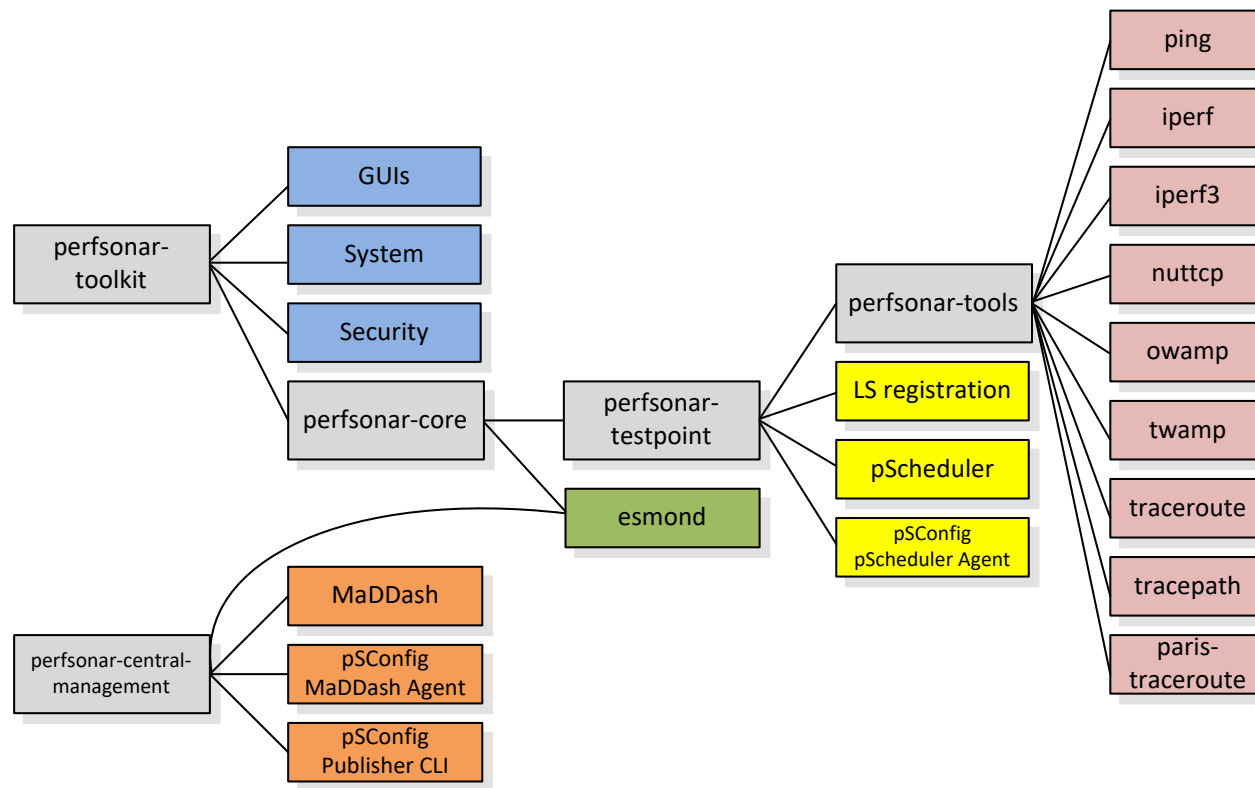
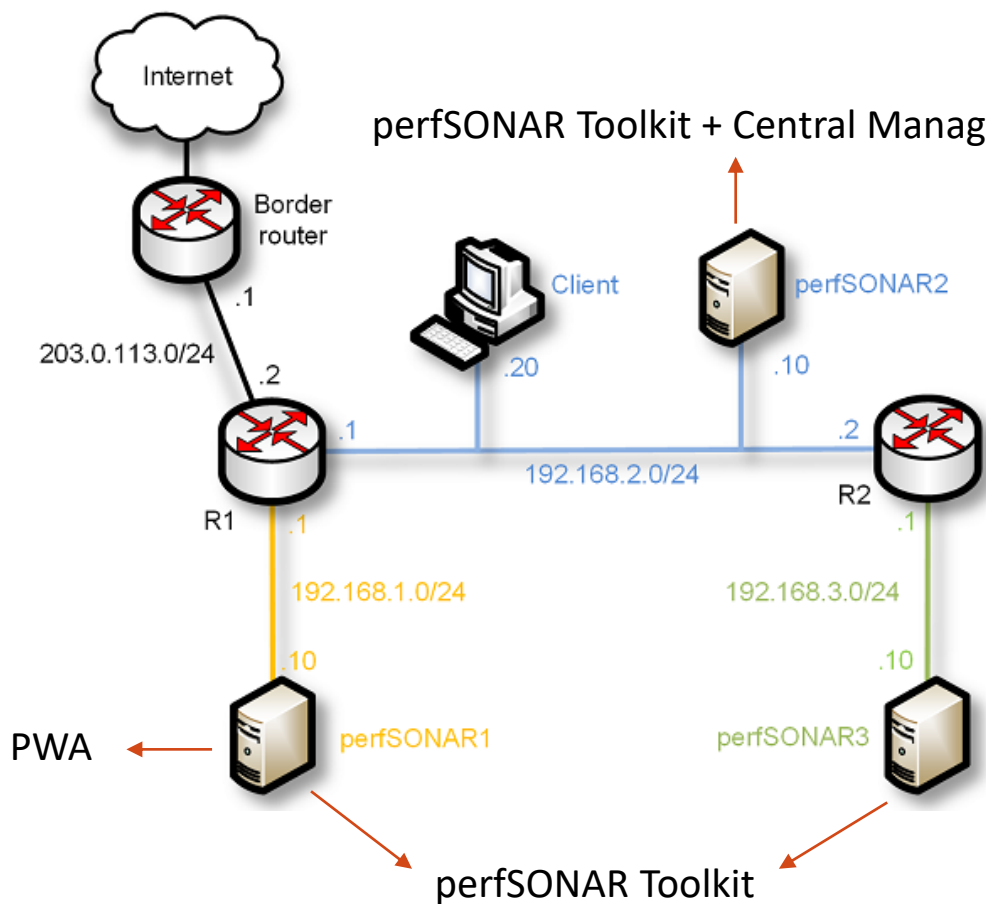
- Background information of the topic being covered (e.g., fundamentals of perfSONAR)
- Section 1 is optional (i.e., the reader can skip this section and move to lab directions)

Section 2... n

- Step-by-step directions

Pod Design

perfSONAR Toolkit + Central Management

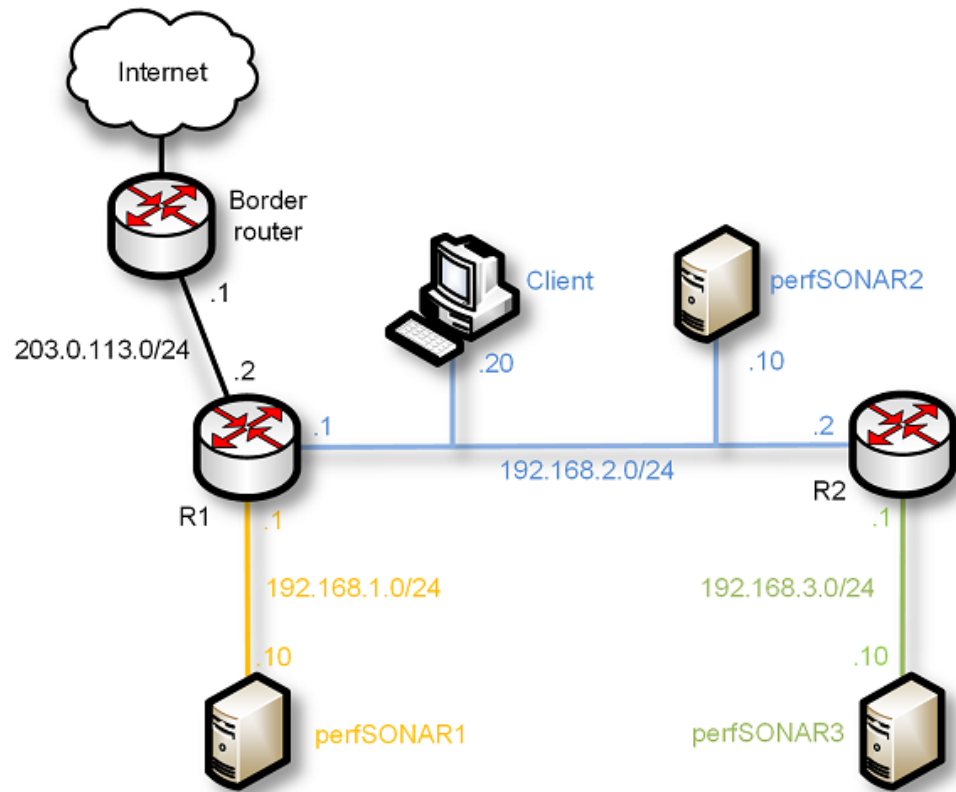


perfSONAR installation options

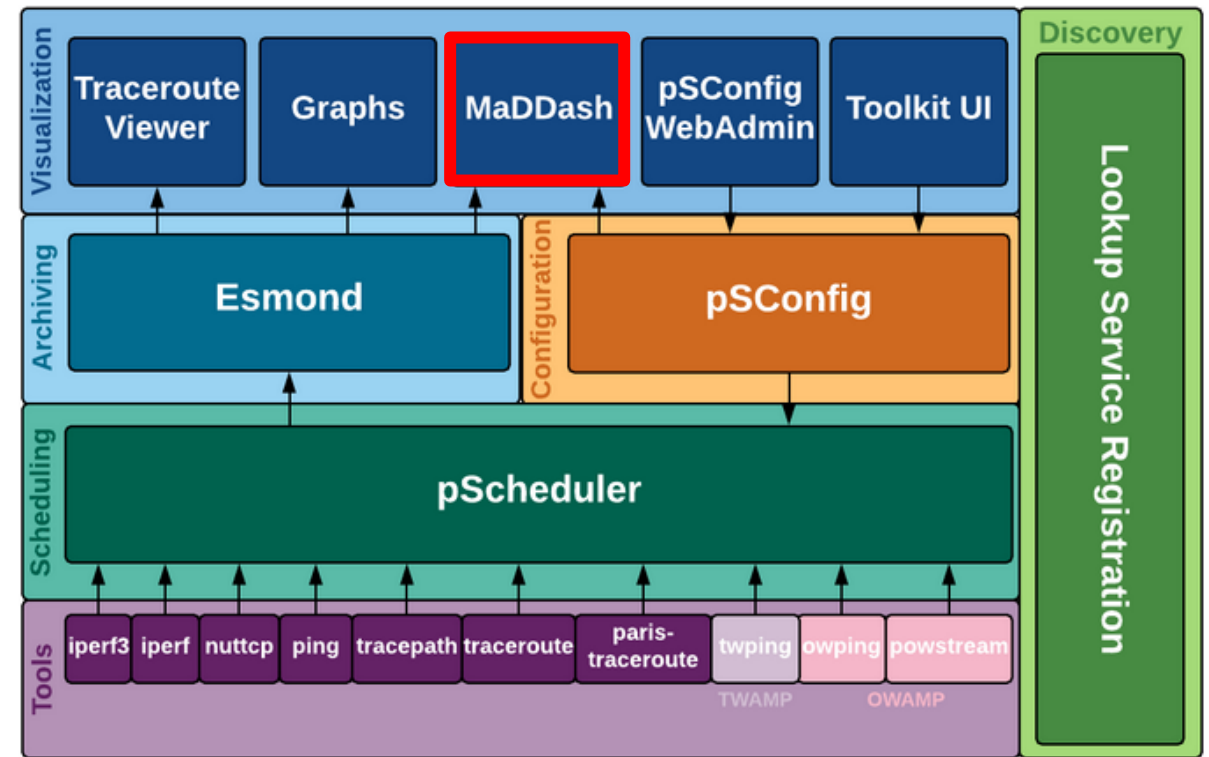
Lab 8: perfSONAR Monitoring and Debugging Dashboard (MaDDash)

MaDDash

- MaDDash display the result of regular tests (i.e., throughput, latency, loss, and traceroute) in a dashboard



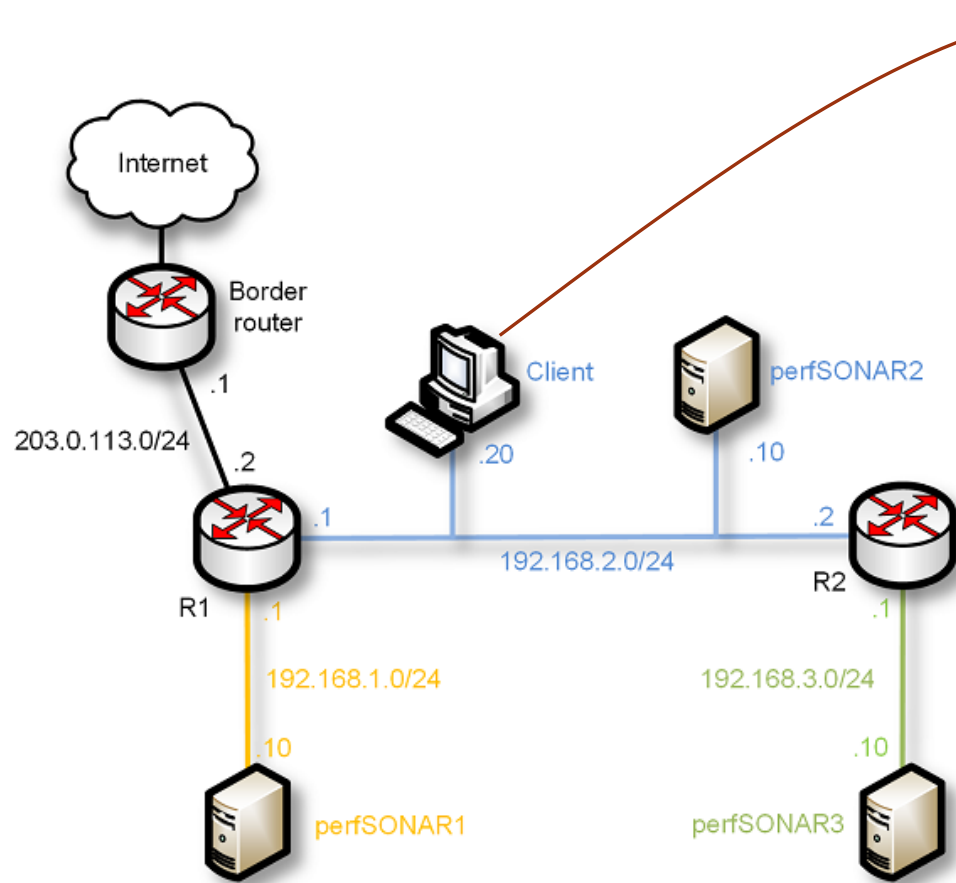
Lab topology



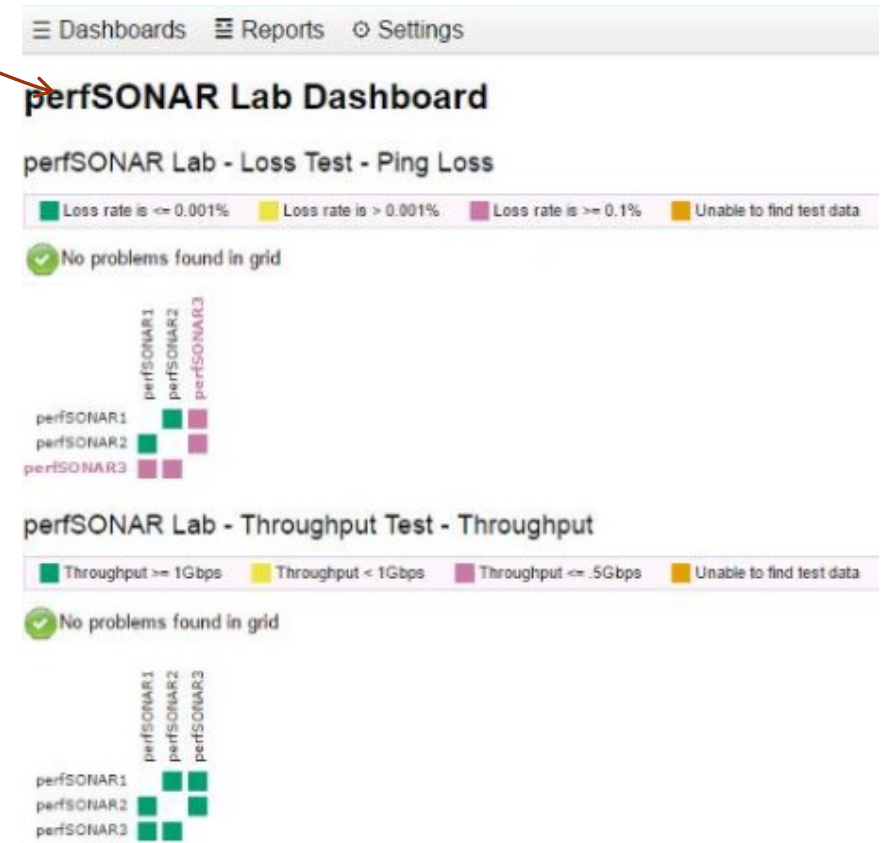
perfSONAR layers

MaDDash

- The user configures MaDDash through the Client machine



Lab topology



Results displayed with MaDDash